

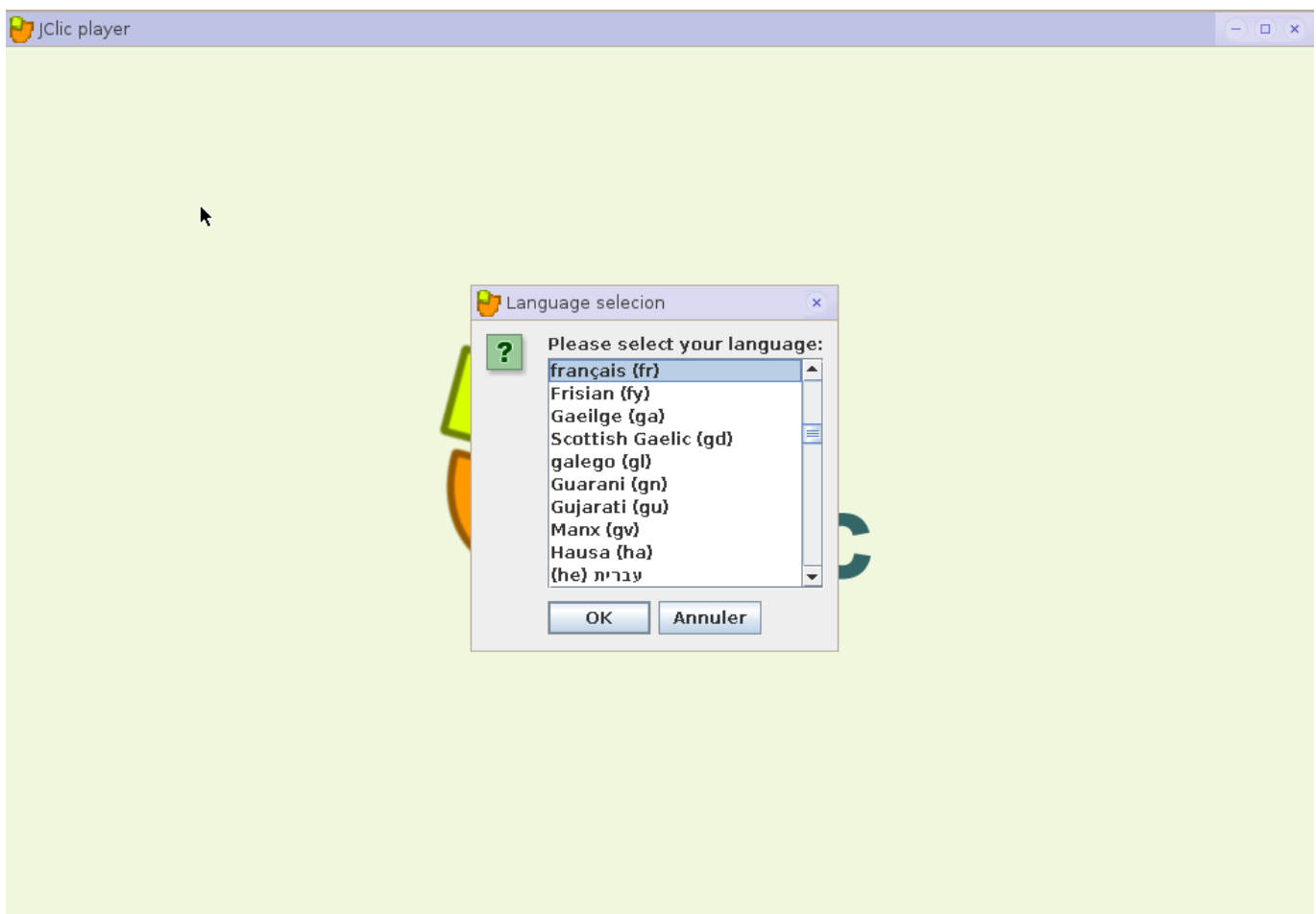
# Jcllic: indiquer le chemin des activités

Cette manipulation est à effectuer au premier démarrage de Jcllic sous Administrateur, Mini, Super et Maxi.

- Ouvrir Jcllic:



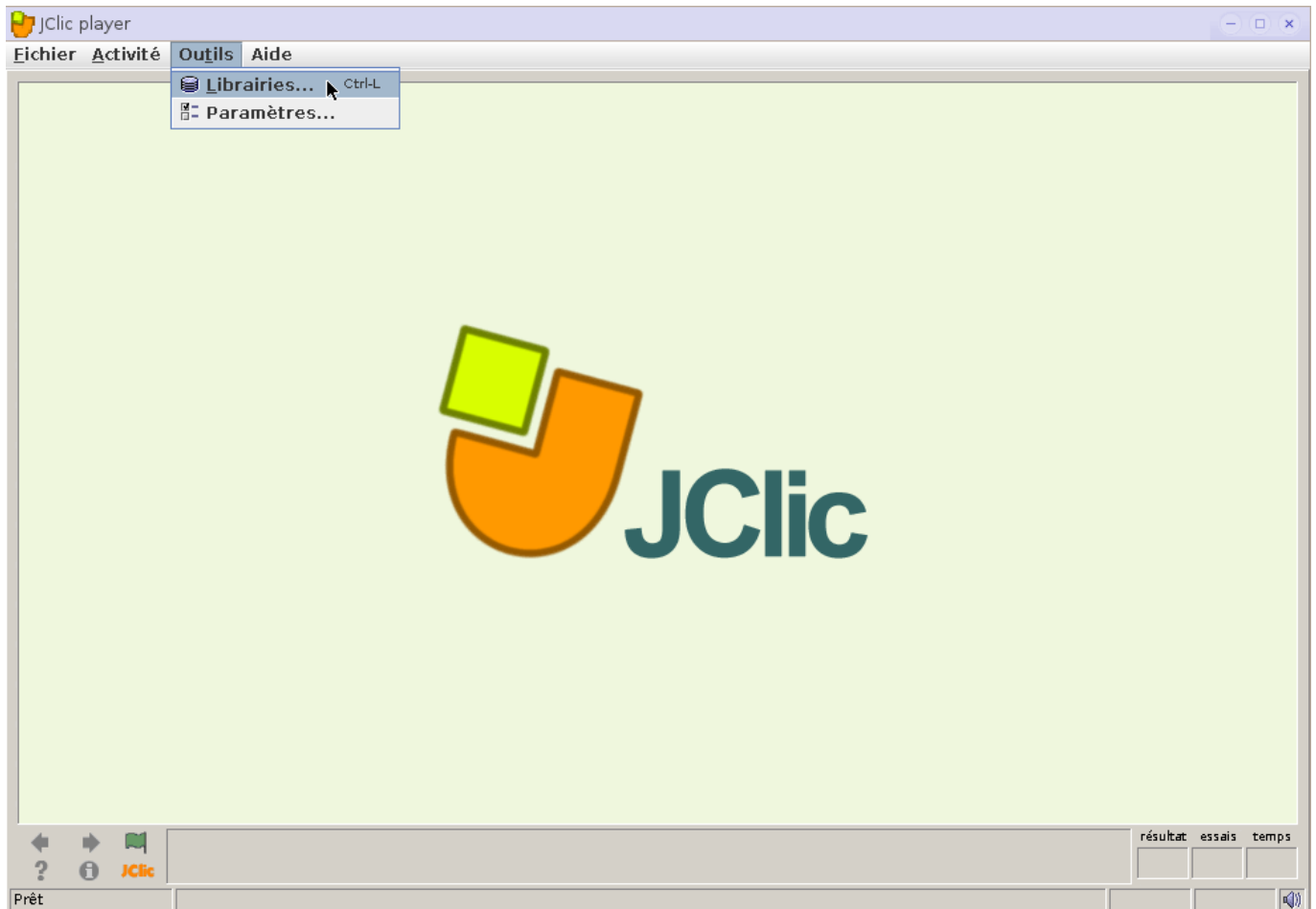
- Sélectionner la langue française:



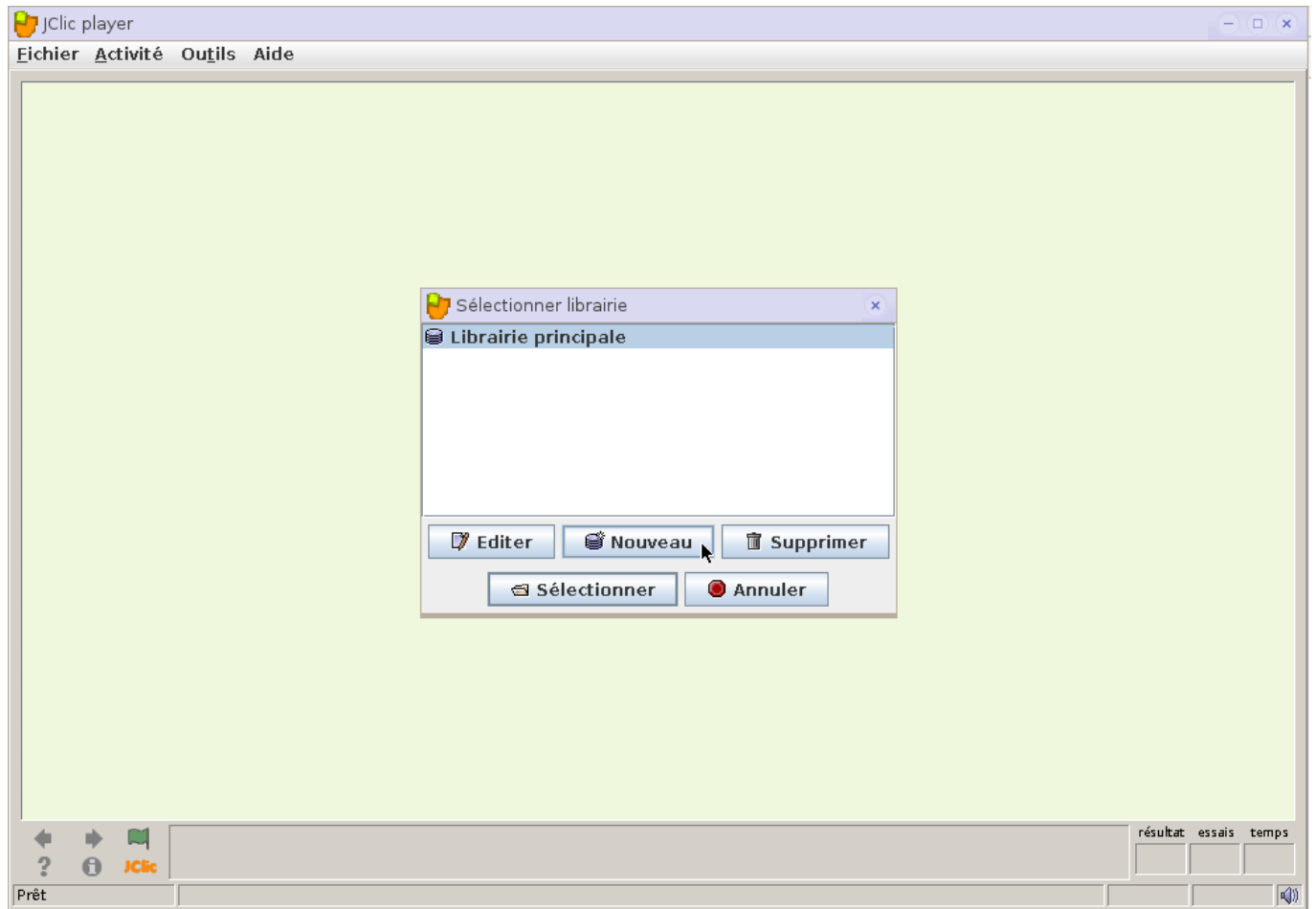
- Cliquez ici sur "OK":



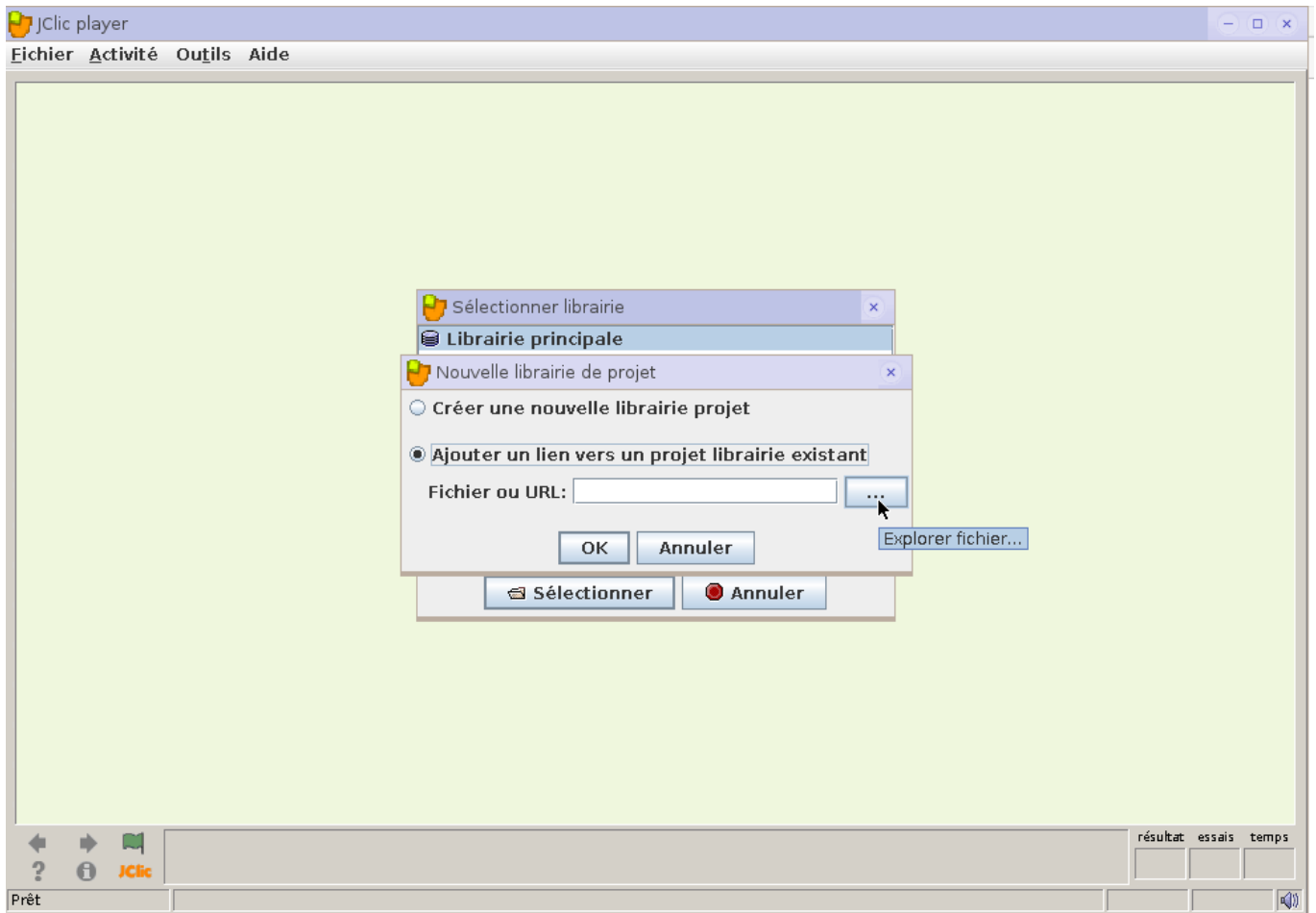
- Ouvrir "Outils ⇒ Librairies":



- Choisir "Nouveau":

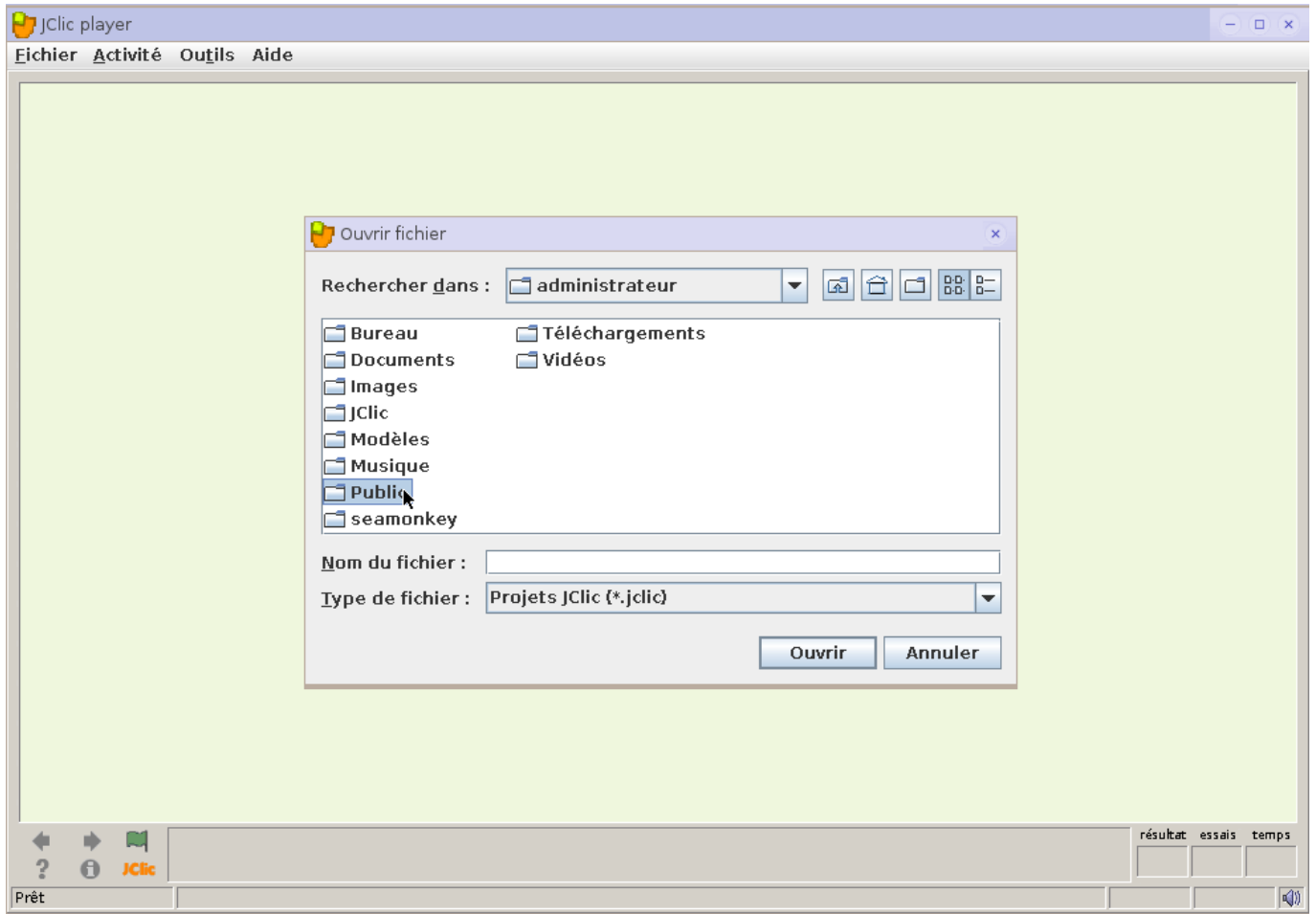
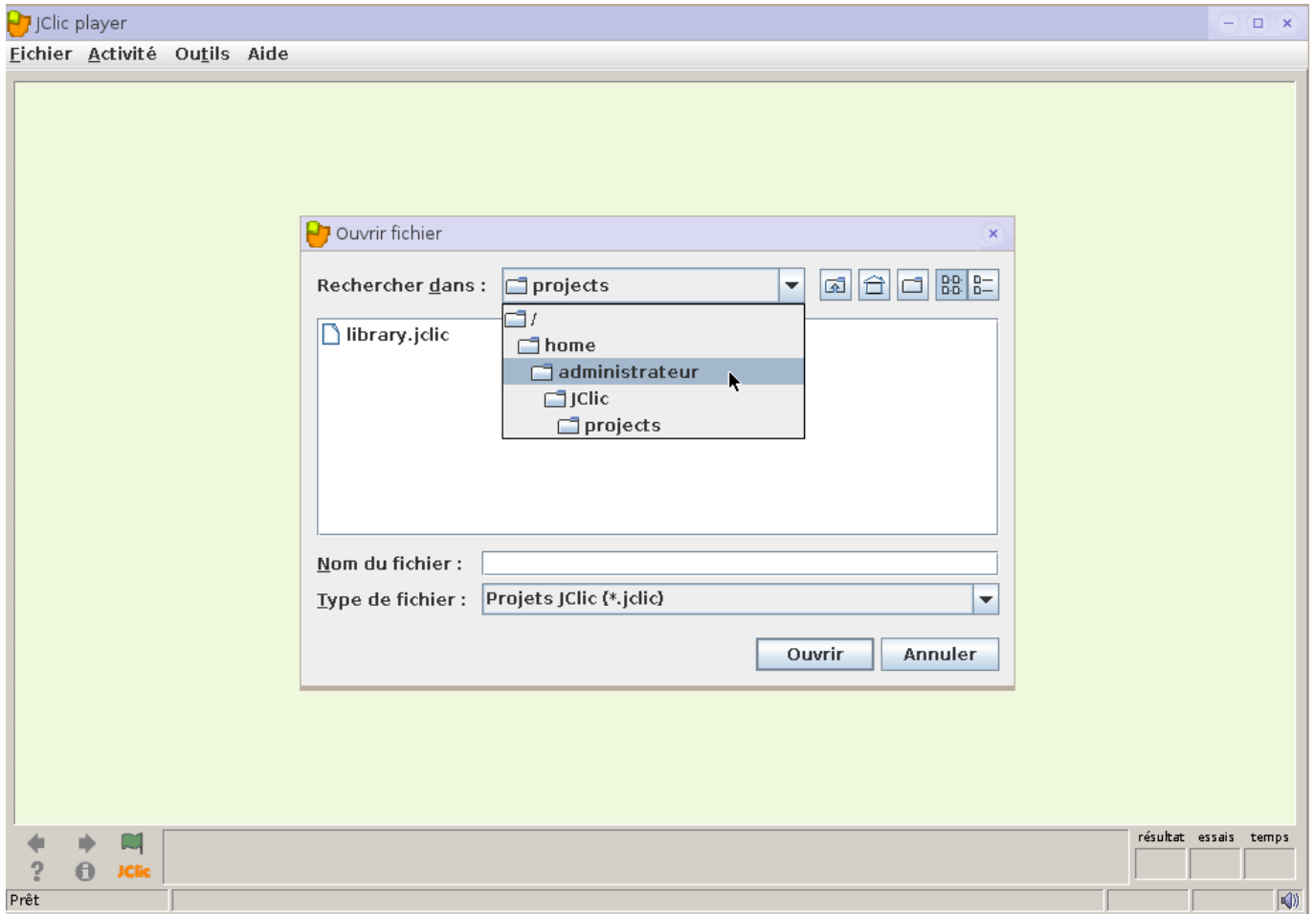


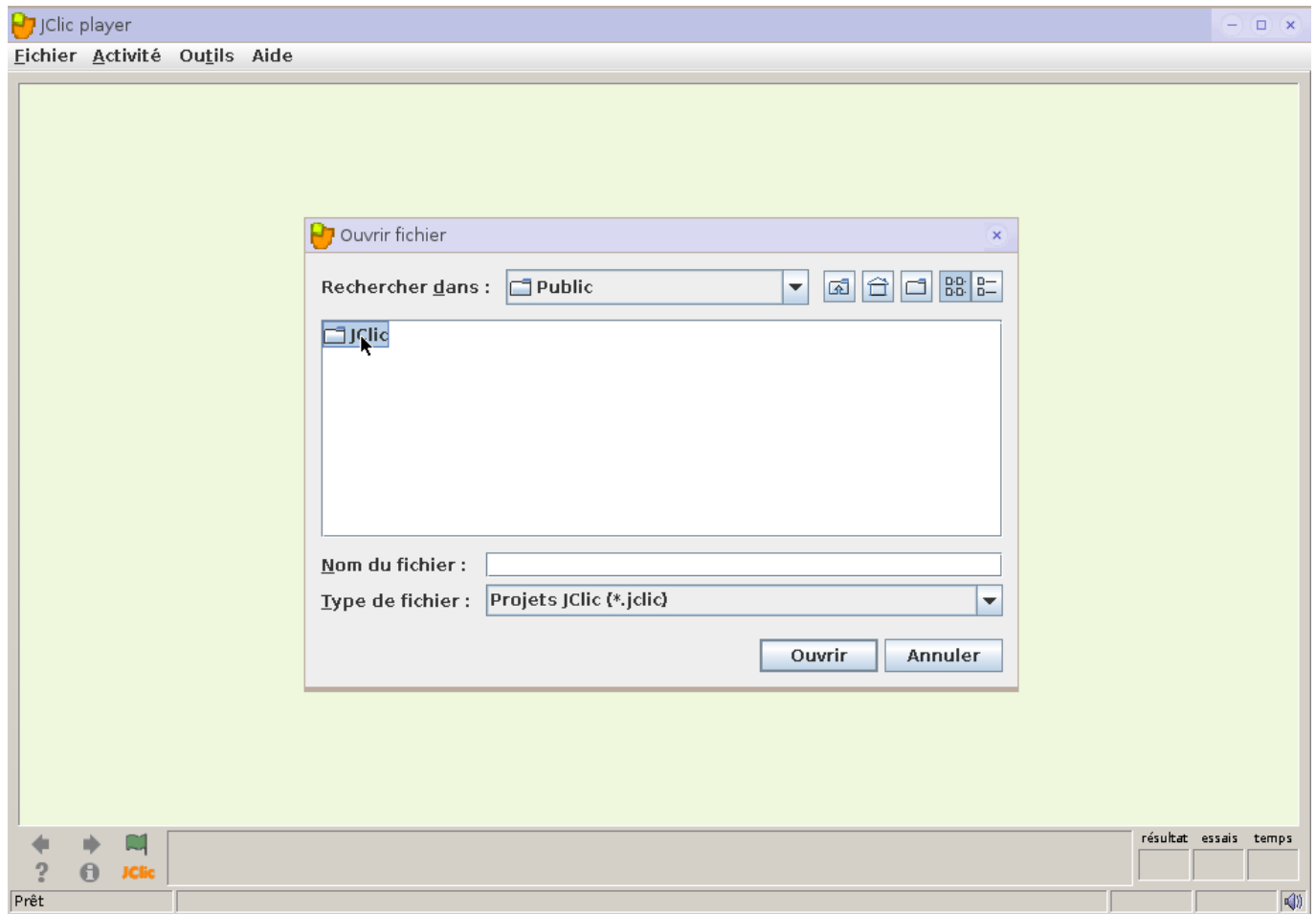
- Cocher "Ajouter un lien vers une librairie existante", puis ouvrir l'explorateur:



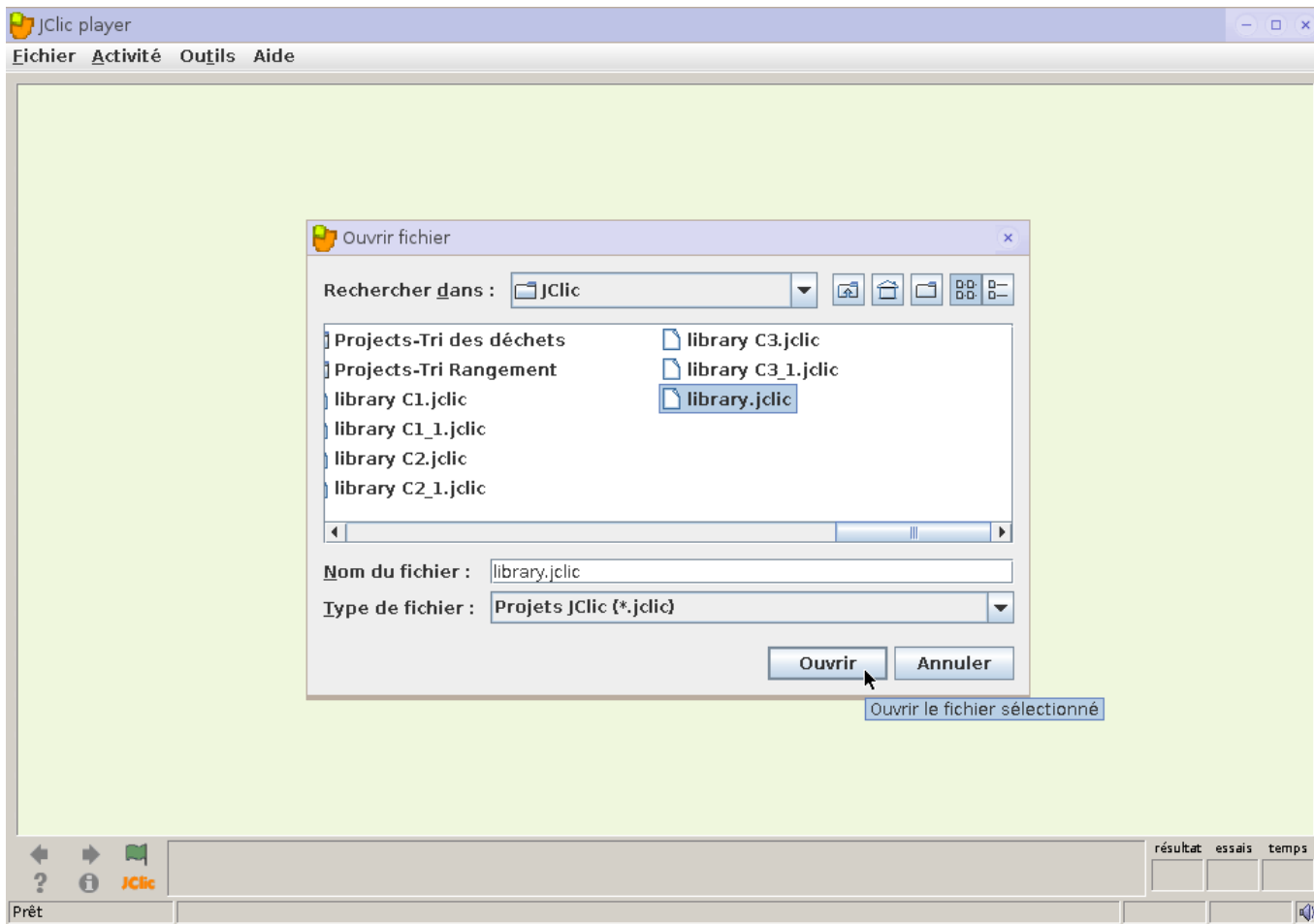
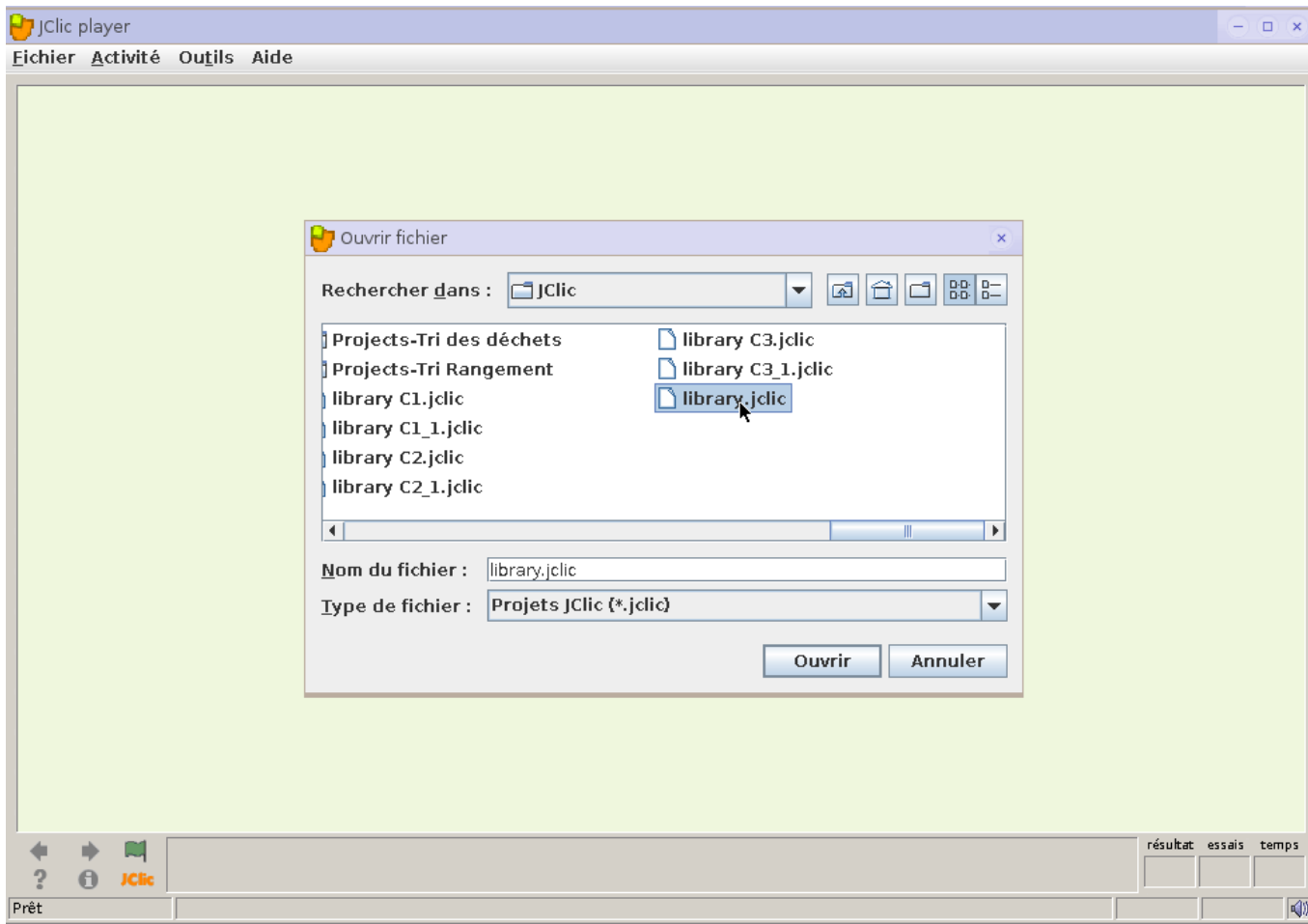
- Se rendre dans “/home/administrateur/Public/JCllic”:

Ce chemin sera toujours celui-ci: pour mini, super et maxi, il faudra aussi choisir “/home/administrateur/Public/JCllic”

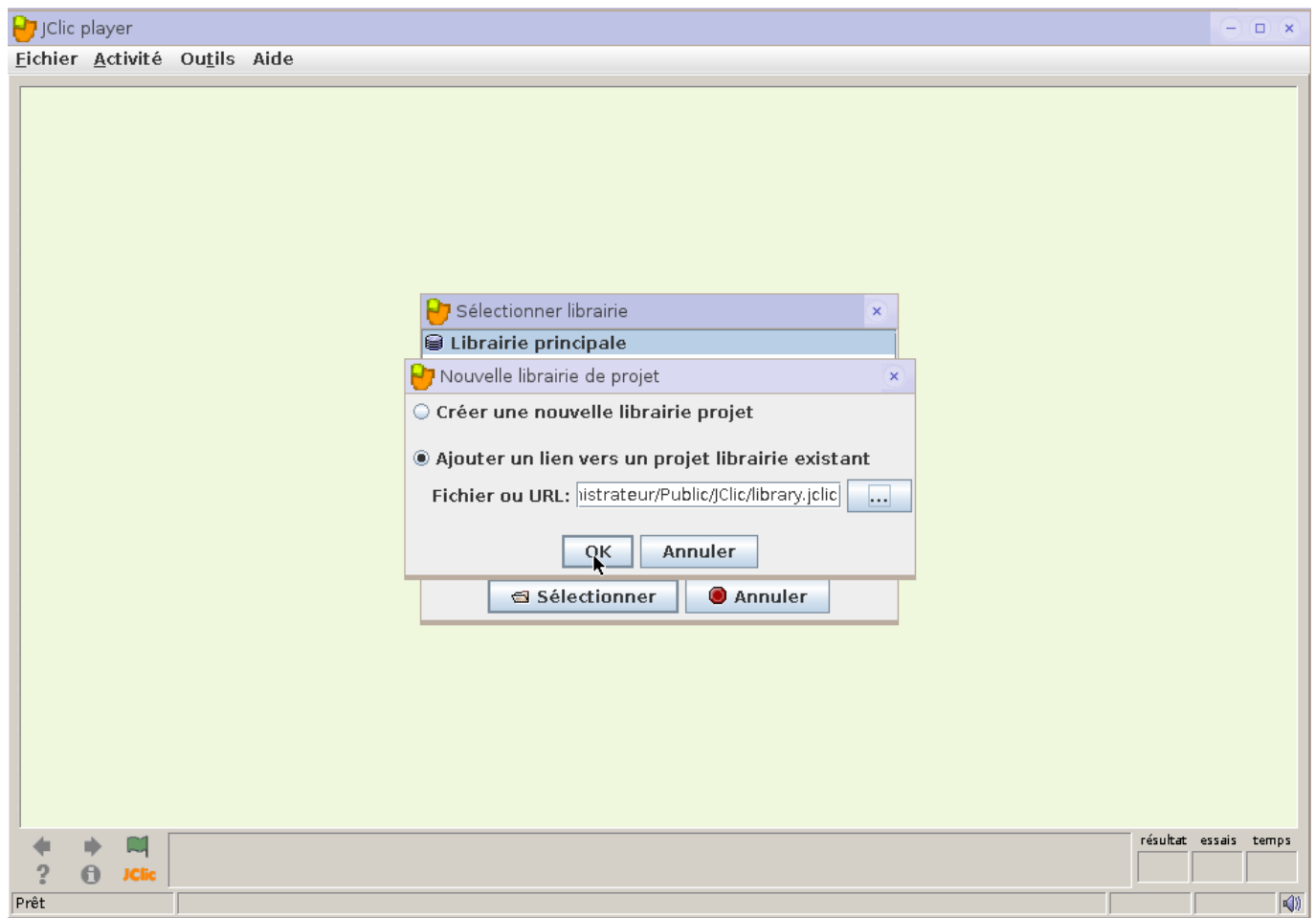




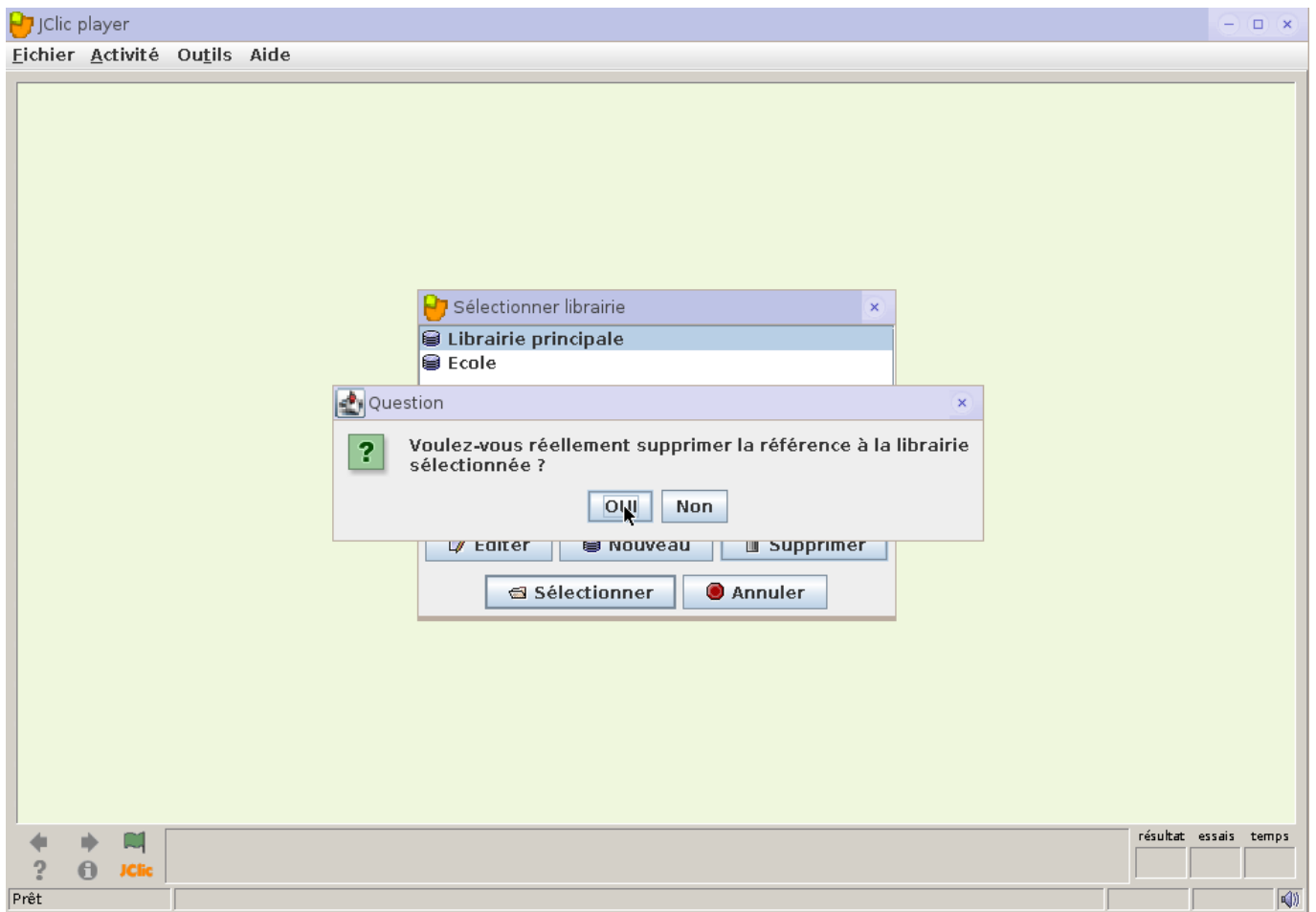
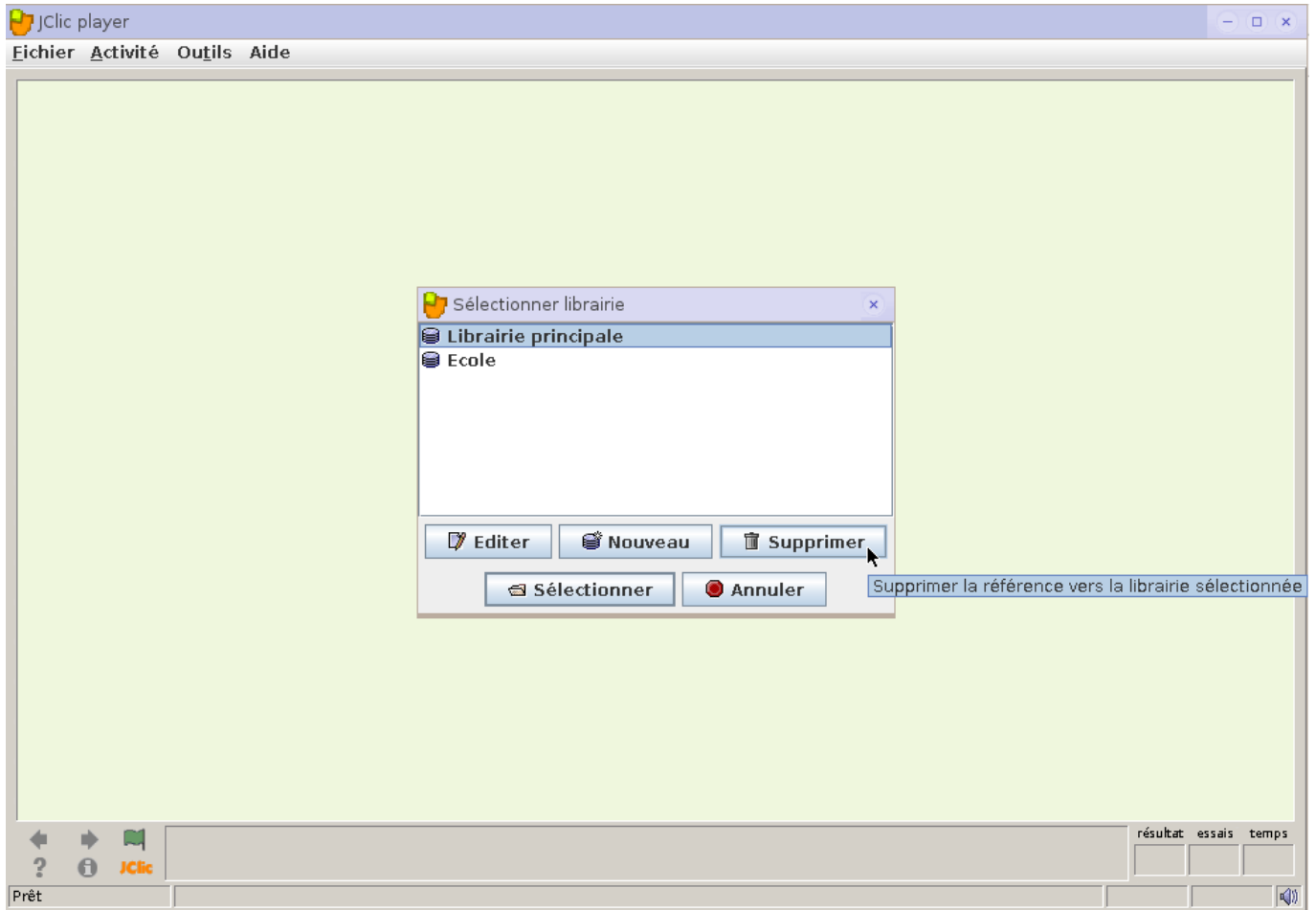
- Ouvrir le fichier "library.jcllic":



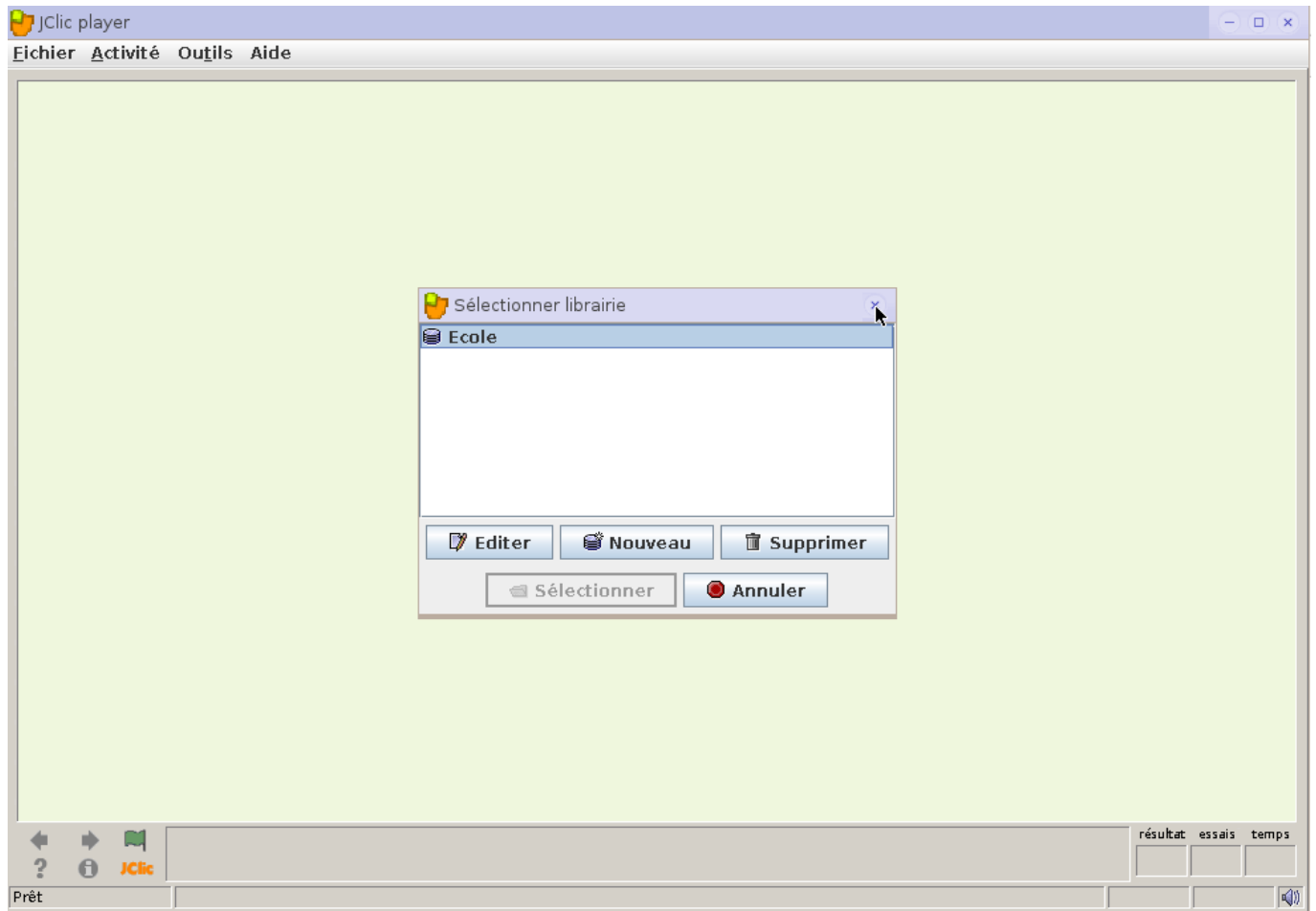




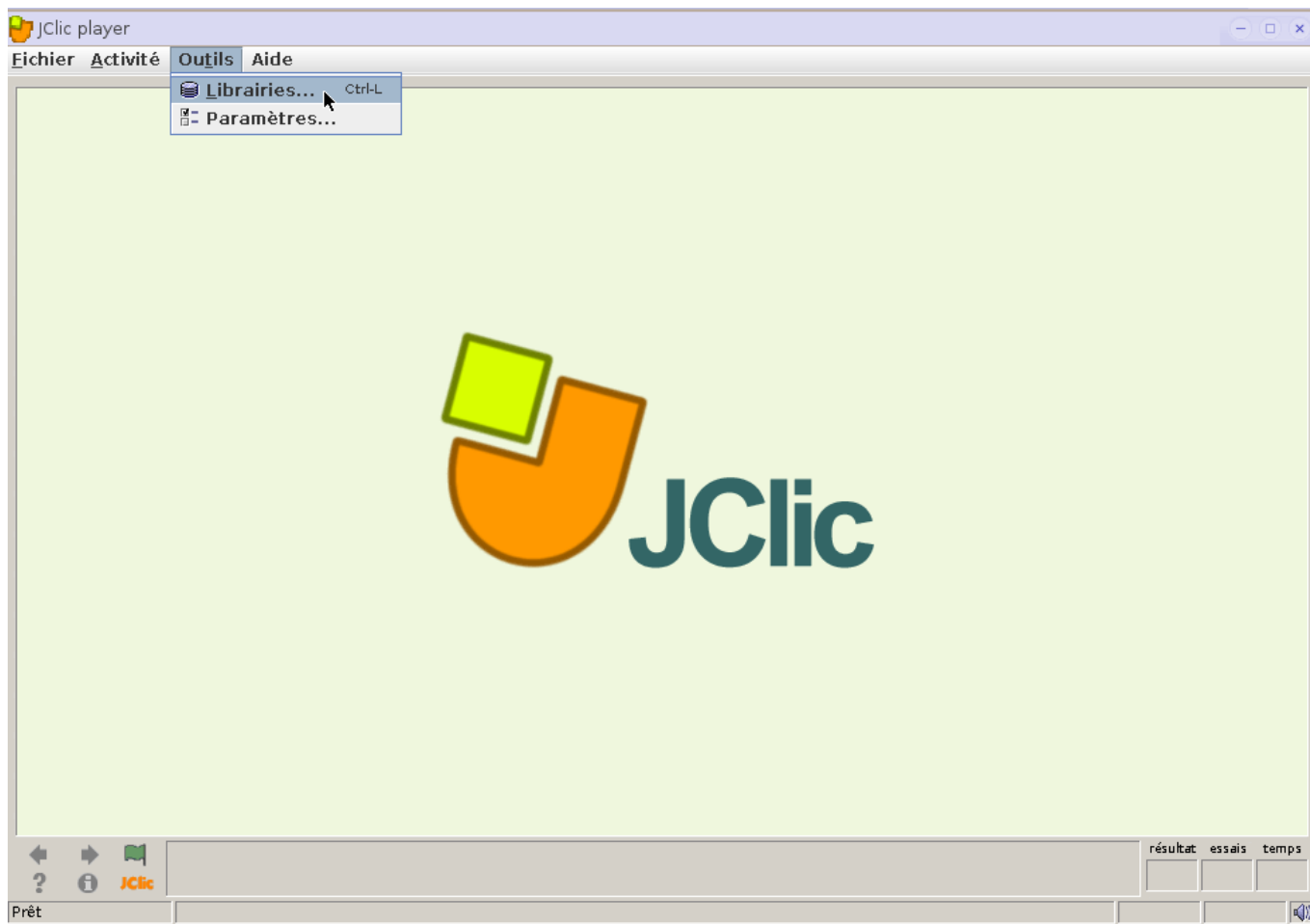
- Supprimer la librairie principale:



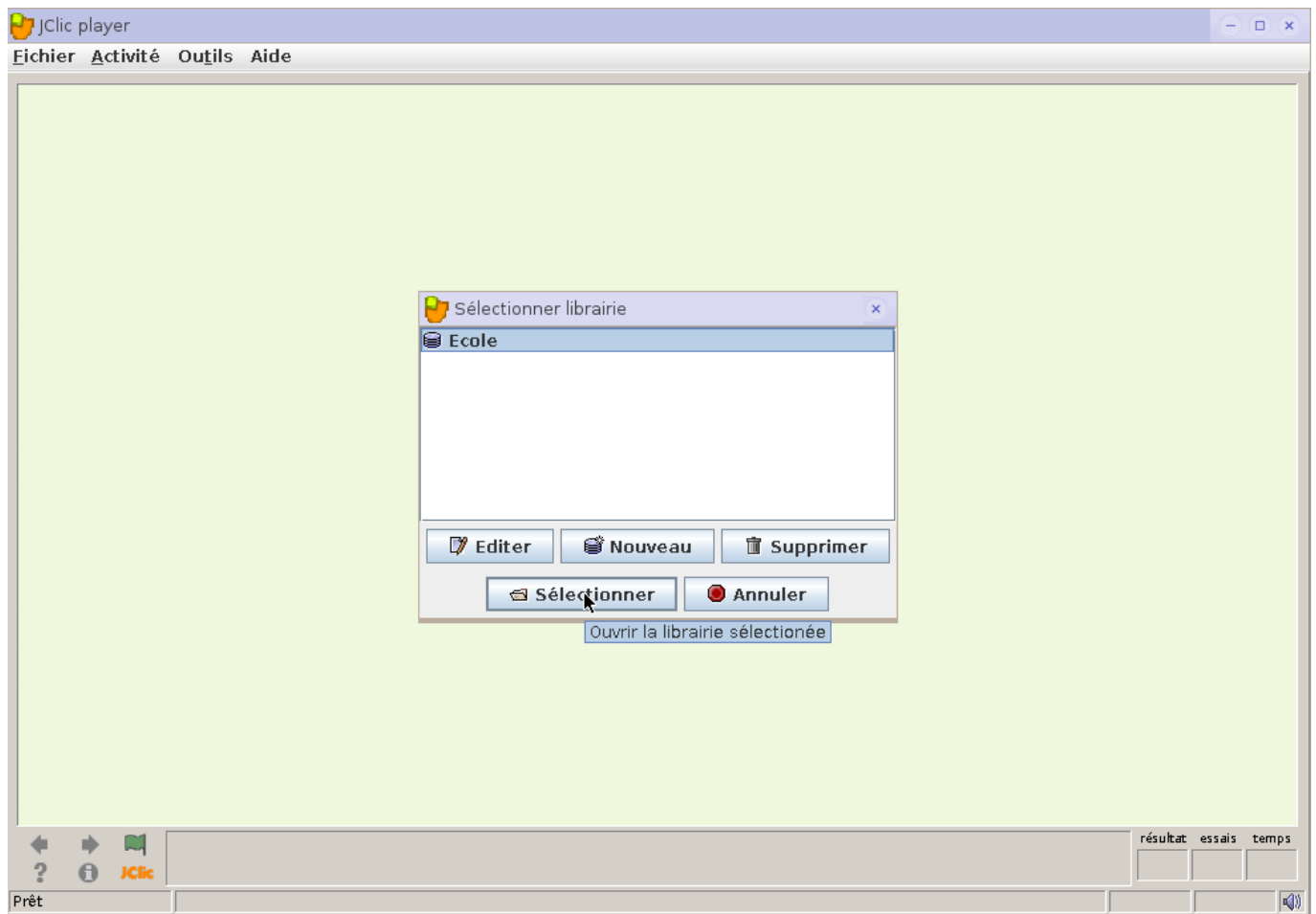
- Fermer la fenêtre:



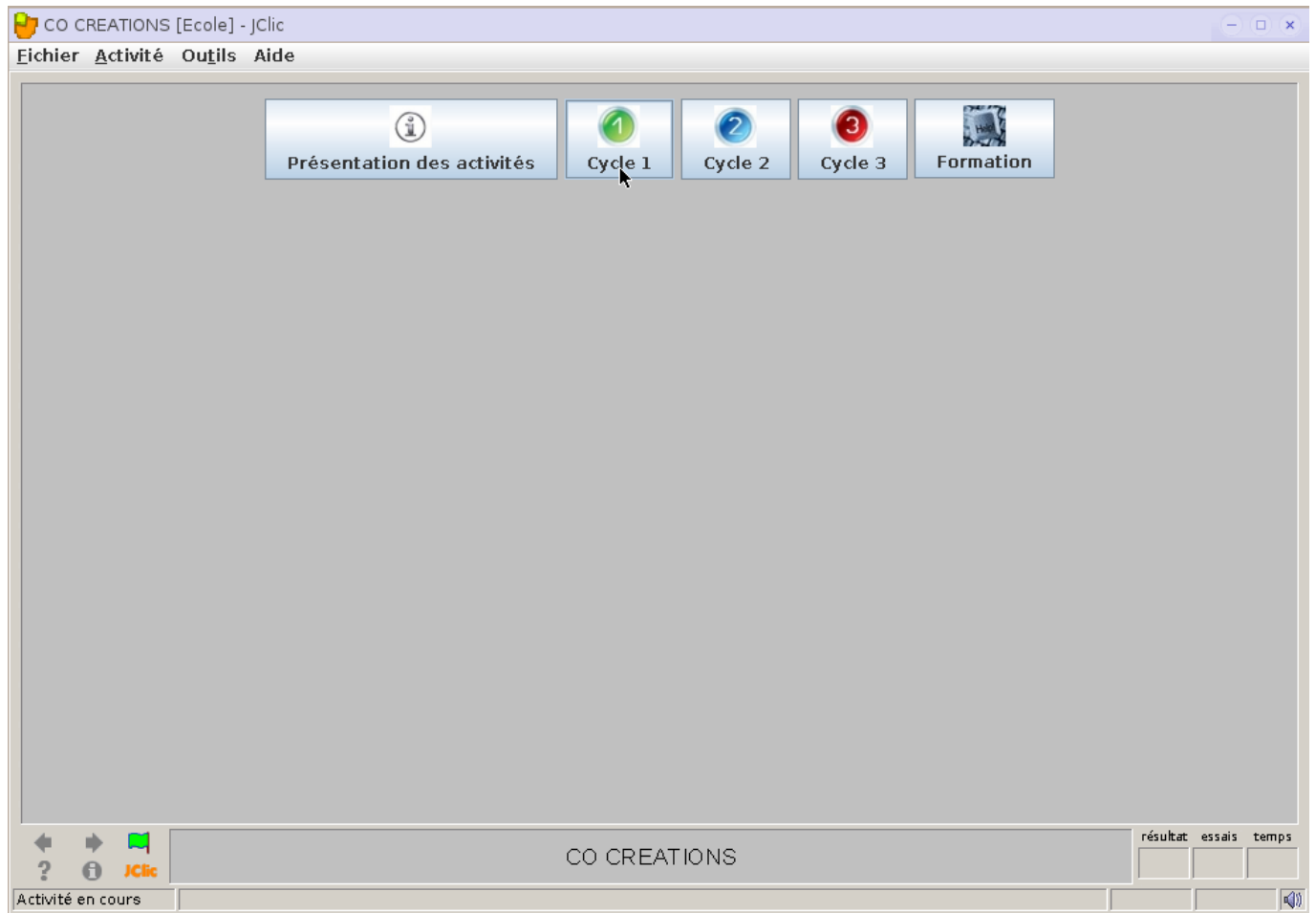
- Ouvrir à nouveau les librairies:



- Sélectionner la librairie "Ecole":



- Il ne reste qu'à choisir le cycle:



From:  
<http://wiki.primtux.fr/> - **PrimTux - Wiki**

Permanent link:  
<http://wiki.primtux.fr/doku.php/jclic>

Last update: **2018/07/26 14:42**

